

*PICC Resource
Associates, LLC and
SPM Resources, LLC
Present*

PICC Insertion Continuing Education Fall

BASIC AND ADVANCED PICC INSERTION
HELD SATURDAY OCTOBER 17TH AND SUNDAY OCTOBER 18TH

Basic PICC and Midline Insertion*: Day 1– is offered by PICC Resource Associates, LLC. This class covers insertion and care of PICC and Midline catheters. Meets and exceeds standards and guidelines for PICC Line and Midline insertion education. Includes: clinician requirements, identifying indications, benefits of use, preparation, informed consent, vein anatomy, insertion techniques, catheter and introducer device selection, complication identification, management and prevention. 8 hour class, on completion 7 contact hours will be earned. Date: Saturday October 17th 2009 from 8:30 am to 4:30 pm. **\$265.00**

For the Basic class only:

*This continuing nursing education activity has been approved by the Rhode Island State Nurses Association (RISNA). RISNA is accredited as an approver of continuing nursing education by the American Nurses Credentialing Center's Commission on Accreditation.

Advanced PICC Line Insertion: Day 2– is offered by SPM Resources, LLC. This class covers insertion of PICC Line catheters using ultrasound and Modified Seldinger Technique. *Prerequisite: this is day 2 of our PICC insertion education; attendees must have completed our basic PICC insertion class OR have prior experience in insertion of PICC Line catheters with or without ultrasound.* 6 hour class. A certificate of completion will be earned. Date: Sunday, October 18th 2009 from 8:30 am to 4:30 pm. **\$265.00**

NEW!: LOCATION AND LUNCH IS NOW INCLUDED WITH CLASS REGISTRATION

Location: The classes will be held at the Courtyard Marriott Hotel located at 780 Bridgeport Avenue, Rd, Shelton, Connecticut 06484. To register for a room at the hotel call (800) 321-2211 and request the "PICC Resource" discounted room rate. **For planning purposes and due to limited seating; we prefer to receive sign up by 4 weeks prior to the class start date. We will accept registrations within less than 4 weeks of a class date until the class has been filled. Discounts for groups of 3 or more. Call us for details.**

Pre-requisites: The Basic PICC Insertion class attendee should be either an RN, advanced practitioner, physician, or other clinician that is allowed to perform PICC and or Midline insertions per state law and the state board that governs the clinician's practice. In addition the clinician should have a background that includes substantial experience in IV therapy. Prior to attending these courses clinicians are advised to review their governing state board's practice guidelines for PICC and Midline catheter procedures. The pre-requisites for the Advanced PICC Insertion Class are the same as the Basic class and in addition recent prior experience in PICC insertion or completion of our Basic PICC Insertion Class. Please contact us if you have questions regarding the pre-requisites.

To register: Call to confirm availability. Once confirmed you can register and pay over the phone (phone payments ask for Alice Cennamo), pay online, fax to our secure fax line, or mail in a registration form with payment. Our fax number is listed below. We accept payments by check or credit card. To register and pay online go to: <http://www.piccresource.com/cart>
Make checks payable to: PICC Resource Associates, LLC

Mailing address: 55 Peace Acre Lane
Stratford, CT 06614

Phone: (203) 377-5252 or Toll Free (888) 333-5171, Fax: (914) 885-1711

For more information contact: Customer Support; email: customer_support@piccresource.com

Refund and Cancellation Policy: No refunds will be given for scheduled classes or classes cancelled by customers after payment and registration is accepted by PICC Resource Associates, LLC (with the exception of classes cancelled by PICC Resource Associates, LLC when unable to sufficiently fill class attendance; if this occurs registrants for the cancelled class will be notified within 3 to 4 weeks prior to the class start date). If a customer completes payment and registration for a class, and is unable to attend the class; the customer may elect to apply the registration and payment to another future date for the same class or for a class determined to be of similar content and value at the discretion of PICC Resource Associates, LLC and upon agreement of the customer.

J Cennamo 2006

PICC RESOURCE ASSOCIATES COURSE REGISTRATION FORM

Register 3 or more for our group discount!
Call for details

Check Off Class(es) Attending:	Length Hrs	Price
-----------------------------------	---------------	-------

<input type="checkbox"/> Basic PICC and Midline Insertion	8	\$265.00
---	---	----------

<input type="checkbox"/> Advanced PICC Insertion	6	\$265.00
--	---	----------

Check here if a check will be mailed in for the class. Total: _____

Date of Course _____

Name (for billing also) _____

Professional Title _____

Employer _____

Address _____

City, State, Zip _____

Phone _____

Email- for confirmation _____

If faxing enter credit card type & number _____

Credit Card Expiration Date & Security Code _____

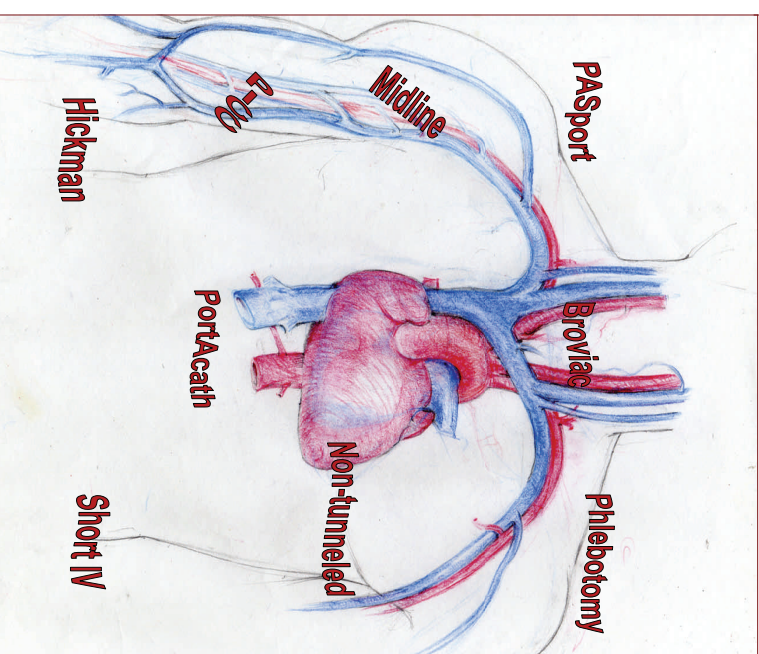


55 Peace Acre Lane
Stratford, CT 06614



Venous Access Educators and Consultants

PICC Insertion Classes
Fall 2009



<http://www.piccresource.com>
(888) 333-5171

© Picc Resource Associates, LLC

Hotel, Flight, Shuttle, & Taxi Service Near the PICC Resource Workshop Site- update Apr. 2009

Workshop Onsite Hotel

The class is held onsite at the Courtyard Marriott on 780 Bridgeport Ave. in Shelton, Connecticut. For reservations online hotel website is: <http://www.marriott.com/bdrcy> or call in for reservations at (800) 321-2211. Be sure to give the following group code for a discount: piapiaa. The hotel main telephone number is (203) 929-1500. A full 2 page flyer provided by the hotel is included at the end of this package. For driving directions to the workshop site, the full address is:

Courtyard Shelton Marriott
780 Bridgeport Avenue
Shelton, CT 06484

Train Information

If you come in by train, in most cases you would come in to Connecticut by the Metro-North commuter train. Metro-North has connections from New York City to many points within Connecticut. Metro-North's telephone number for fares and schedules is 800-638-7646. The customer service number is (212) 672-1290, and their website is: <http://www.mta.info/mnr/>. If you are staying onsite at the Courtyard Marriott; the hotel will provide a free shuttle to and from the following train stations all are close and within 15 minutes or less from the hotel: Derby-Shelton (3.8 miles away), Stratford (7.2 miles away), or Bridgeport (8.8 miles away). The Derby-Shelton train station is the closest to the hotel but it may require you to transfer in Bridgeport. If you plan to use this service, be sure to call the hotel well in advance of your arrival to reserve a space and confirm shuttle availability. For other arrangements such as taking a taxi cab, be aware that local cabs will meet you by appointment only. Telephone numbers for taxi cab companies are:

(203) 334-6161 Yellow Cab
(203) 732-8294 Valley Cab Company

Other Local Hotels

The hotel information on page 3 of this document was obtained on the Connecticut Motor Club aka the AAA website. The prices quoted are AAA member prices as of September 27, 2008. Prices as you know may change, and you may be able to negotiate for the same or lower price with the hotel when you call in to register. Often the hotels have the same or similar discount rates for government employees, or members of the entertainment club, or other motor clubs. If you want to get more information on these hotels online go to the following Connecticut Motor Club home page, and click on hotels on the left hand side of the page. From there follow the page instructions to choose a hotel site. I suggest enter Shelton, Connecticut and range it 10 miles. You will get results that include all of the hotels in nearby within 5 to 10 minutes away from the class site. To get a current update of other hotels in the area; go to the AAA Connecticut Motor Club website at: <http://www.aaact.com/CTMC/CTMCAA20.Nsf/vwWeb/Homepage>. Click on the blue circle labeled "hotels" near the top middle section of the page. On the next page under section 1. labeled "Choose a Destination", click on the radio button towards the top right for "choose an address", and enter the zip code 06484 (for Shelton, Ct) in the search by zip code box. This will give you updated results.

Airports and Airport Shuttles or Limos

If you plan to come in by plane, the closest large airports are Bradley in Windsor Locks, Connecticut or La Guardia in New York. Bradley is about 1 hour away, and La Guardia is a busier airport and is about 1 to 2 hours away depending on New York City and highway traffic. There are three shuttle services that connect directly to La Guardia and JFK airports. One of the shuttle services also picks does stops at Bradley airport. Please confirm the schedule and rates with the shuttle service when making a reservation as they occasionally make changes to their services. The three main shuttle/limo services in the area are: 1) Connecticut limo provides a shuttle from Bradley, LaGuardia, and JFK airports. They will stop at the Courtyard Marriott Hotel- class site in Shelton, CT by request, you must make the request when calling in for reservation or pick up at the airport. The cost is about \$71.00 one way. Connecticut Limo's shuttle service does not do direct pick up at the Courtyard Marriott- class site hotel for returns to the airport. To accommodate for this; the Courtyard Marriott provides a free shuttle service to the Connecticut Limo station in Bridgeport for guests staying at the hotel. If you wish to use this service- arrangements must be made in advance with the hotel. Connecticut Limo's telephone number is (800) 472-5466; their address in Bridgeport (for returns to airport) is: 2135 State Street Ext., Bridgeport, CT; and their website is: <http://www.ctlimo.com> 2) Prime Time will provide a shuttle with drop off and pick up at the Courtyard Marriott- class site hotel in Shelton, CT - by request with a reservation made at least 2 business days in advance from Laguardia and JFK airports only for about \$70.00 one way, or \$136.00 round trip. Prime Time's number is: (800) 377-8745 and their website is: <http://www.2theairport.com/shuttles/laguardia.html> 3) Red Dot shuttle will also drop off and pick up at the Courtyard Marriott class site hotel in Shelton, CT by request with a reservation servicing Laguardia and JFK airports for about \$69.00 one way. Red Dot's number is (800) 673-3368, and their website is: <http://www.18006reddot.com/> .

Smaller airports nearby are: Westchester airport in White Plains, New York (40 to 45 minute drive)- this airport is highly used by locals, for convenience, Tweed airport in New Haven, Connecticut (30 minutes drive), and Sikorsky airport in Stratford, Connecticut (10 minute drive). All of the shuttle services previously listed in this section will provide private cars, SUVs, or vans to these smaller airports at varying price levels by request.



Courtyard Shelton

780 Bridgeport Avenue

Shelton, Connecticut 06484 USA

Phone: 1-203-929-1500

Fax: 1-203-929-6711

Sales: 1-203-567-0050

Sales Fax: 1-203-929-6711

Marriott Rewards category: 2

This hotel has a smoke-free policy

Hotel Awards

Directions

From Airport

New Haven (HVN) - HVN

- 1-203-466-8833

- Hotel direction: 19 miles S

- Driving directions: Burr St. (SW) toward Girard Ave. Turn right on Girard Ave., right on CT-337/Townsend Ave. Left on Main St. Merge onto I-95S. Take exit 27A for Route 8 North. Take Exit 12. At first light take a left (Old Stratford Rd.) At 2nd traffic light take a left (Bridgeport Ave.) Hotel is 0.5 miles on Left.

- Estimated taxi fare: 30.00 USD (one way)

Bridgeport (BDR) - BDR

- 1-203-576-8163

- Hotel direction: 12.5 miles N

- Driving directions: Route 8 North to Exit 12. At the end of the ramp make a left. At 2nd light take a left this is Bridgeport Ave. Hotel is 1/2 mile on the left.

- Estimated taxi fare: 20.00 USD (one way)

Hartford (BDL) - BDL

- 1-860-292-2000

- Hotel direction: 63 miles SW

- Driving directions: Take I-91S to CT-15S Wilbur Cross Pkwy to Exit 52 for Rt. 8 north. Take Exit 12 at bottom of ramp take a left. (Old Stratford Rd.) At 2nd light take a left (Bridgeport Ave.) follow 0.5 miles hotel is on left.

- Estimated taxi fare: 100.00 USD (one way)

New York/La Guardia (LGA) - LGA

- 1-808-647-1685

- Hotel direction: 57 miles N

- Driving directions: Grand Central Pkwy E. toward Long Island. Merge onto I-678 N. exit 9E toward Whitestone Bridge. Merge onto I-95N. Take Exit 27A in Bridgeport for Rt. 8 north. Take exit 12. Bottom of ramp at first traffic light take a left. (Old Stratford Rd.) At 2nd traffic light take a left (Bridgeport Ave) follow 0.5 miles to hotel on left.

New York/JF Kennedy (JFK) - JFK

- Hotel direction: 67 miles N

- Driving directions: I-678 N, merge onto I-95N. Take Exit 27A in Bridgeport for Rt. 8 North. Take Exit 12 at the bottom of ramp and first traffic light take a left. (Old Stratford Rd) Follow to 2nd traffic light and make a left (Bridgeport Ave) follow to Hotel on left 0.5 miles.

White Plains (HPN) - HPN

- 1-914-995-4860

- Hotel direction: 37 miles E

- Driving directions: Take I-684 South to I-287 East to Hutchinson River Parkway North Route 15 North. Follow to Exit 52 for Route 8 North. Take Exit 12 and at bottom of ramp and first traffic light take a left. (Old Stratford Rd.) At 2nd traffic light take a left (Bridgeport Ave.) follow to hotel on left 0.5 miles.

- Estimated taxi fare: 75.00 USD (one way)

Arrival Information

Check-In and Checkout

- Check-in: 3:00 PM, Check-out: 12:00 PM

- Express Check-In and Express Checkout

Parking

- Complimentary on-site parking

Pet Policy

- Pets not allowed

Hotel Details

- 7 floors, 160 rooms, 1 suites

- 10 meeting rooms, 6,300 sq ft of total meeting space

Guest Room Information

(may vary by room type)

General Room Amenities

- Air conditioning
- Alarm clock
- Bottled water, for a fee
- Coffee maker/tea service
- Crib
- Electrical adapters
- Individual climate control
- Iron and ironing board
- Luxury bedding - crisp linens, thicker mattresses, custom comforters, fluffier pillows
- Pillows: down/feather
- Pull-out sofa bed

Bathroom Amenities

- Hair dryer

Room Entertainment

- Cable channel: CNN
- Cable channel: ESPN
- Cable channel: HBO
- Cable/satellite TV
- Color TV
- Movies/videos, pay-per-view

Kitchen Amenities

- Microwave oven

Business Amenities

- Electrical outlet: desk level
- Phone feature: speakerphone
- Phone feature: voice mail
- Two-line phone

Services

Complimentary Service

- Coffee in lobby
- Coffee/tea in-room

Guest Services

- Full-service business center
- Local restaurant dinner delivery
- Room service, 5:00 PM-10:00 PM
- Safe deposit boxes, front desk

Restaurants & Lounges

Huntington Grille- a full service restaurant with bar located at the hotel

- American
- Open for breakfast and dinner
- American Cuisine

Recreation

Swimming

- Short Beach (8 mi)
- Yes

Activities

- Biking trail (10 miles)
- Bowling (5 miles)
- Hiking
- Horseback riding (15 miles)
- Jogging/fitness trail (10 miles)
- Kayaking (10 miles)
- Miniature golf (5 miles)
- Mountain biking, trail (15 miles)
- Nature preserve, trail
- Rock climbing (15 miles)
- Sailing (15 miles)
- Sauna
- Tennis (15 miles)
- Volleyball
- Snow skiing (45 miles)
- Snow skiing (60 miles)
- Snow skiing (60 miles)

Fitness Facilities

- Exercise Room
- Planet Fitness

Golf

- Grassy Hill C.C.(10 miles)
- Tashua Knolls(8 miles)
- Orchards Golf Course(10 miles)

Attractions & Landmarks

- Jones family Farm and Winery
- Beardsley Zoo
- Yale Peabody Museum
- Arena at Harbor Yard
- Bridgeport Bluefish Baseball
- Maritime Aquarium
- Shubert Theater
- Captain Cove's Seaport
- Mohegan Sun Casino
- Foxwoods Casino
- Maritime Aquarium
- Discovery Museum and Planetarium
- Arena at Harbor Yard
- The Ballpark at Harbor Yard
- Harbor Field Baseball Field
- Bridgeport Harbor
- Yale University
- Sikorsky Aircraft

High-speed Internet access

Locations | Connectivity

Public Areas

- Wired
- Wireless

Guest Rooms

- Wireless

Meeting Rooms

- Wired
- Wireless

Hotel Quick Compare

<p style="text-align: center;">Holiday Inn Express Hotel & Suites</p> <p style="text-align: center;"> SAVE</p> <p>695 Bridgeport Ave Shelton CT 06484 Phone: (203) 925-5900 Fax: (203) 944-9180 (800) 465-4329</p> <p>Map / Driving Directions</p> <p style="text-align: center;">▶ Property Details ▶ Book Now</p>	<p style="text-align: center;">Courtyard by Marriott Shelton</p> <p style="text-align: center;"> SAVE</p> <p>780 Bridgeport Ave Shelton CT 06484 Phone: (203) 929-1500 Fax: (203) 929-6711</p> <p>Map / Driving Directions</p> <p style="text-align: center;">▶ Property Details ▶ Book Now</p>
<p style="text-align: center;">Hilton Garden Inn Shelton</p> <p style="text-align: center;"> SAVE</p> <p>25 Old Stratford Rd Shelton CT 06484 Phone: (203) 447-1000 Fax: (203) 447-1050</p> <p>Map / Driving Directions</p> <p style="text-align: center;">▶ Property Details ▶ Book Now</p>	<p style="text-align: center;">Homestead Studio Suites Hotel-Shelton-Fairfield County</p> <p style="text-align: center;"></p> <p>945 Bridgeport Ave Shelton CT 06484 Phone: (203) 926-6868 Fax: (203) 929-5772</p> <p>Map / Driving Directions</p> <p style="text-align: center;">▶ Property Details ▶ Book Now</p>

Hotel Quick Compare

<p style="text-align: center;">Homewood Suites by Hilton</p> <p style="text-align: center;"> SAVE</p> <p>6905 Main St Stratford, CT 06614 Phone: (203) 377-3322 Fax: (203) 378-6677</p> <p>Map / Driving Directions</p> <p style="text-align: center;">▶ Property Details ▶ Book Now</p>	<p style="text-align: center;">Residence Inn by Marriott</p> <p style="text-align: center;"> SAVE</p> <p>1001 Bridgeport Ave Shelton CT 06484 Phone: (203) 926-9000 Fax: (203) 926-1587</p> <p>Map / Driving Directions</p> <p style="text-align: center;">▶ Property Details ▶ Book Now</p>
<p style="text-align: center;">Trumbull Marriott</p> <p style="text-align: center;"> SAVE</p> <p>180 Hawley Ln Trumbull CT 06611 Phone: (203) 378-1400 Fax: (203) 378-4958</p> <p>Map / Driving Directions</p> <p style="text-align: center;">▶ Property Details ▶ Book Now</p>	